

LED Emergency Light

TYPE: EM110,EM114,EM119

LED Emergency Light accord with US STANDARD - Injection-molded, flame-retardant and high impact thermoplastic housing. 120V/277V AC universal voltage operation. This exit sign with design is great for placing on doorways, isles, restaurant, office building and warehouses.



EM110



EM114



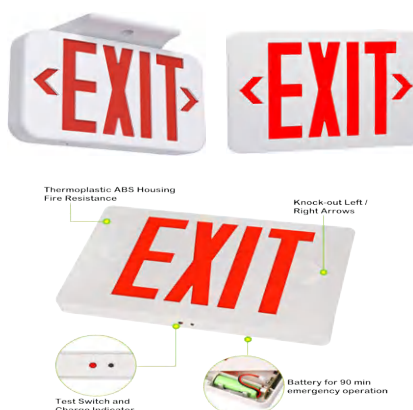
EM119



PRODUCT DISPLAY:



EM110



EM114



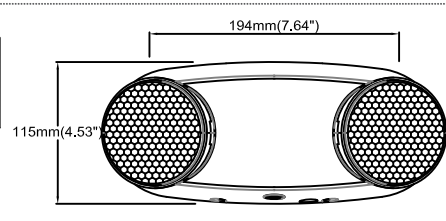
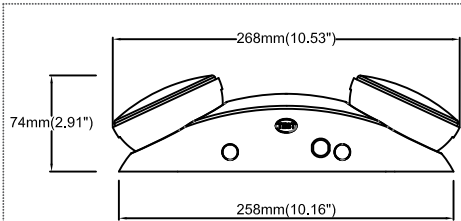
EM119

SPECIFICATION			
WATTAGE	EM110	EM114	EM119
WORKING VOLTAGE	120-277V 50Hz/60Hz	120V / 277V 50Hz/60Hz	120V / 277V 50Hz/60Hz
EFFICACY	0.97		0.86
INPUT WATTAGE	4.5W		5W
INPUT CURRENT	0.03A		0.04A
RECHARGE TIME		24 Hours	
OUTPUT	2W	1W	2W
EMERGENCY DURATION		≥90 Mins	
BATTERY	3.6V 600 mA h	1.2V 800 mA h	3.6V 1000 mA h
LUMEN	300lm	NONE	250lm
ENVIRONMENT		DAMP	
WORKING TEMPERATURE		5°C ~ 30°C	
CERTIFICATION		ETL	
CABLE		Input Connect, No cable	
WARRANTY		5 year limited	

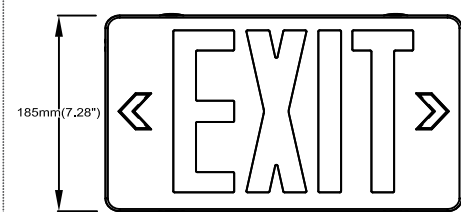
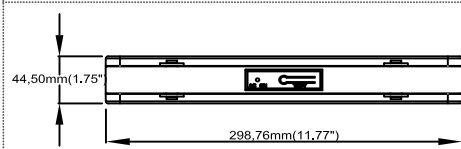
LED Emergency Light

TYPE: EM110,EM114,EM119

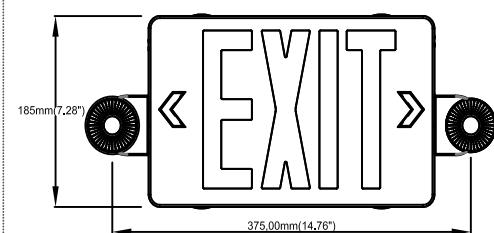
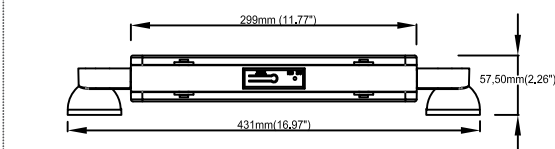
DIMENSION:



WATTAGE	EM110
NT. WEIGHT	0.95 lbs(N.W)
BOX DIM.	23.6" x 12.2" x 11.8"(14Pcs/CTN)



WATTAGE	EM114
NT. WEIGHT	1.72 lbs(N.W)
BOX DIM.	17.7" x 13.4" x 17.3"(14Pcs/CTN)



WATTAGE	EM119
NT. WEIGHT	2.07 lbs(N.W)
BOX DIM.	17.7" x 16.1" x 17.3"(14Pcs/CTN)

ORDERING INFORMATION

EXAMPLE:

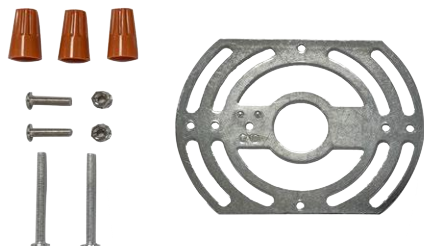
EM110 / EM114 / EM119

EM	110
PRODUCT	WATTAGE
EM Emergency Light	110/114/119 Product Code

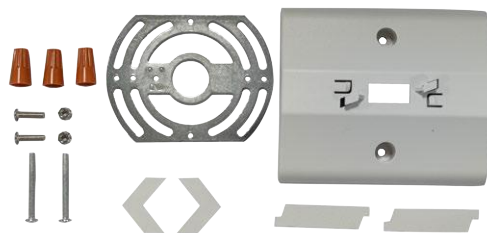
LED Emergency Light

TYPE: EM110,EM114,EM119

ACCESSORIES (Standard)



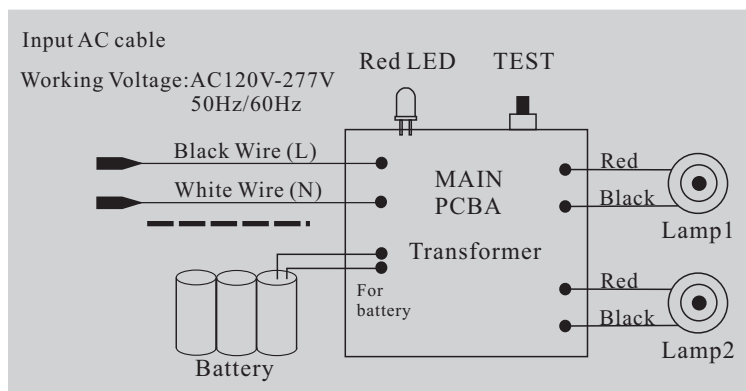
EM110



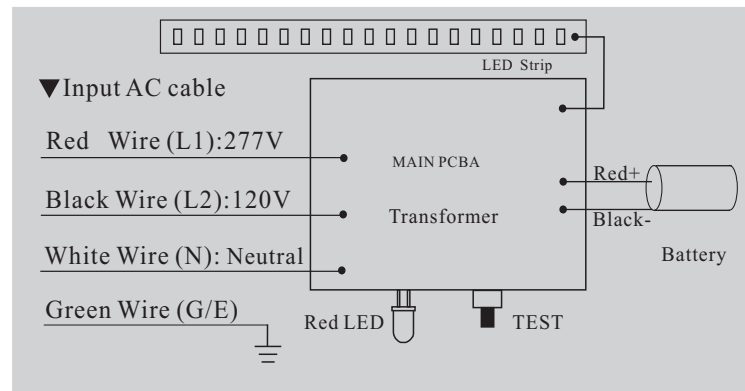
EM114/EM119

WIRING DIAGRAM:

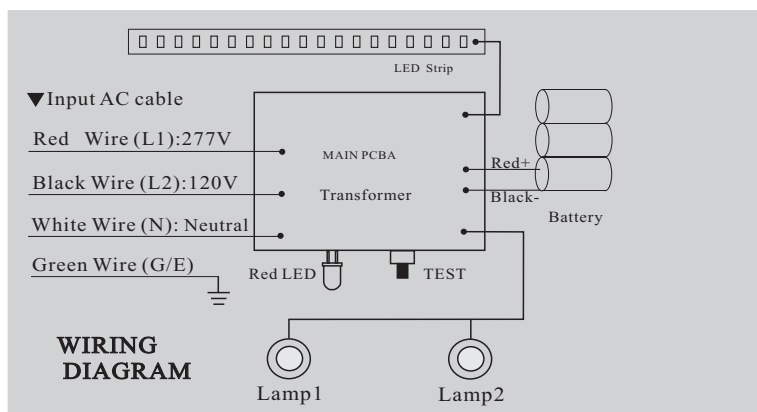
EM110



EM114



EM119



LED Emergency Light

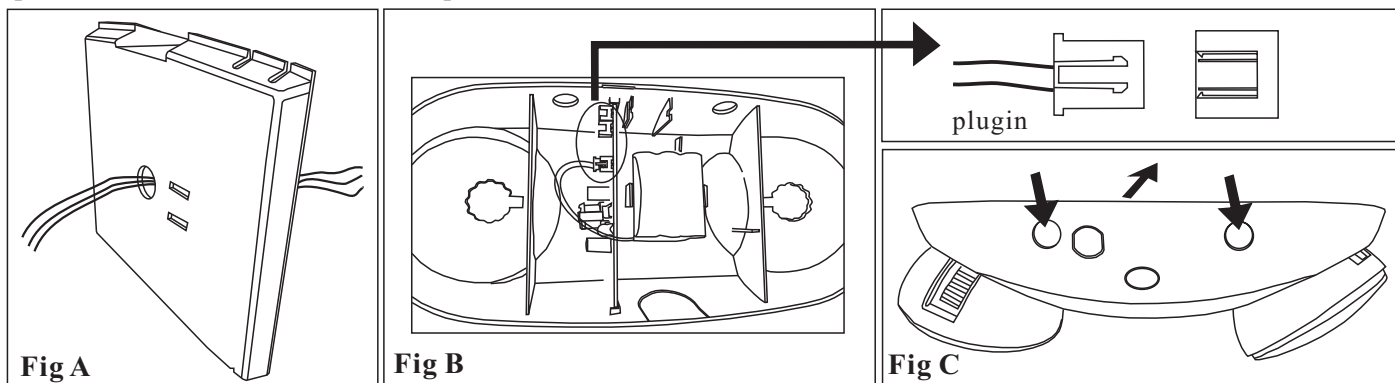
TYPE: EM110,EM114,EM119

INSTRUCTIONS :

EM110:

INSTALLATION(J-BOX MOUNTING):

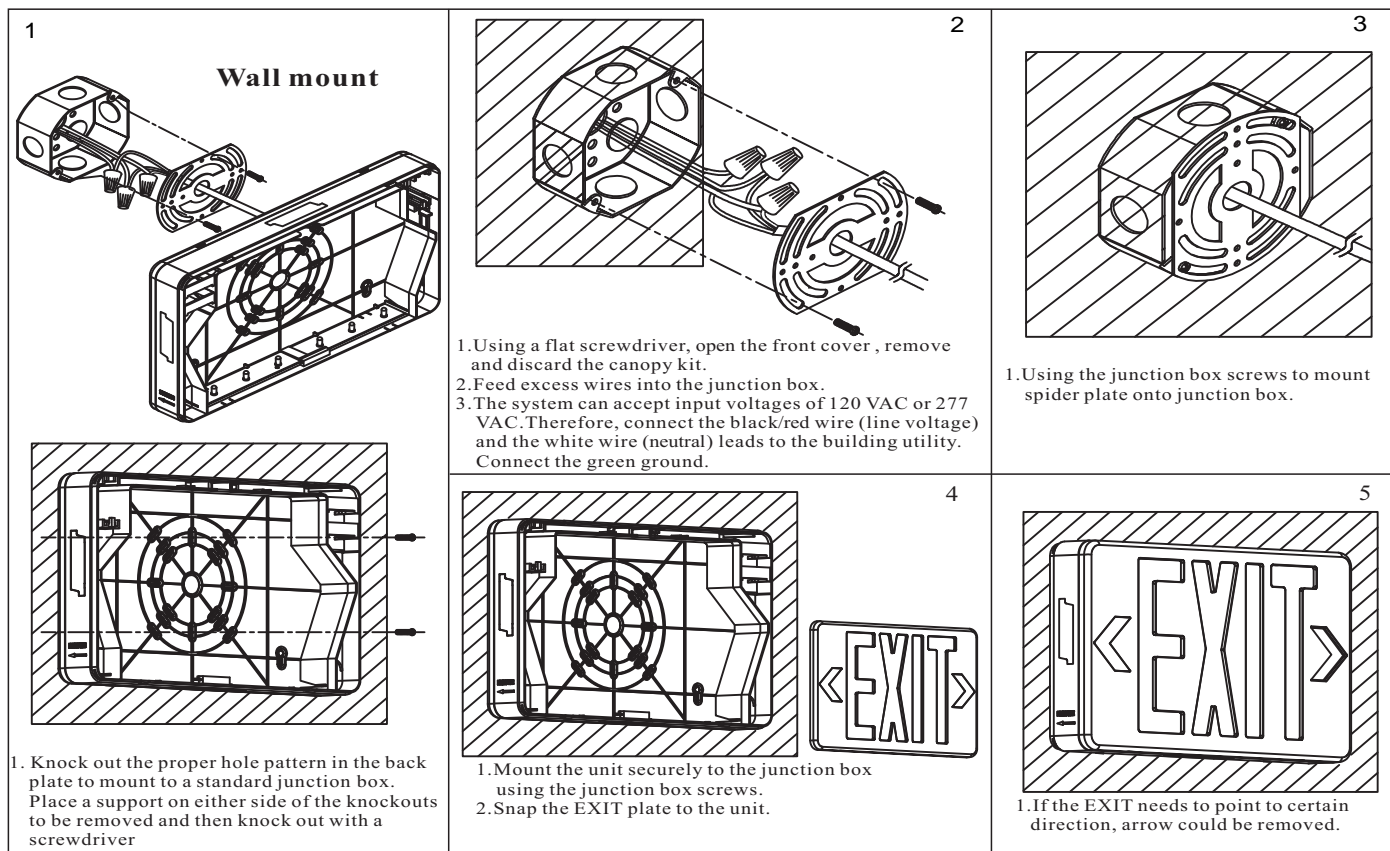
- 1 Feed fixture leads through main bottom case and connect AC power supply (Fig A).
- 2 Connect wires through J-Box .Place bottom case on J-Box and secure with screws.
- 3 Connect battery only when continuous AC power can be provided to the unit(Fig B) .
- 4 Align snaps and push housing directly onto main bottom case (Fig C) apply continuous AC power and press "TEST" button to check lamps.



WARNING:

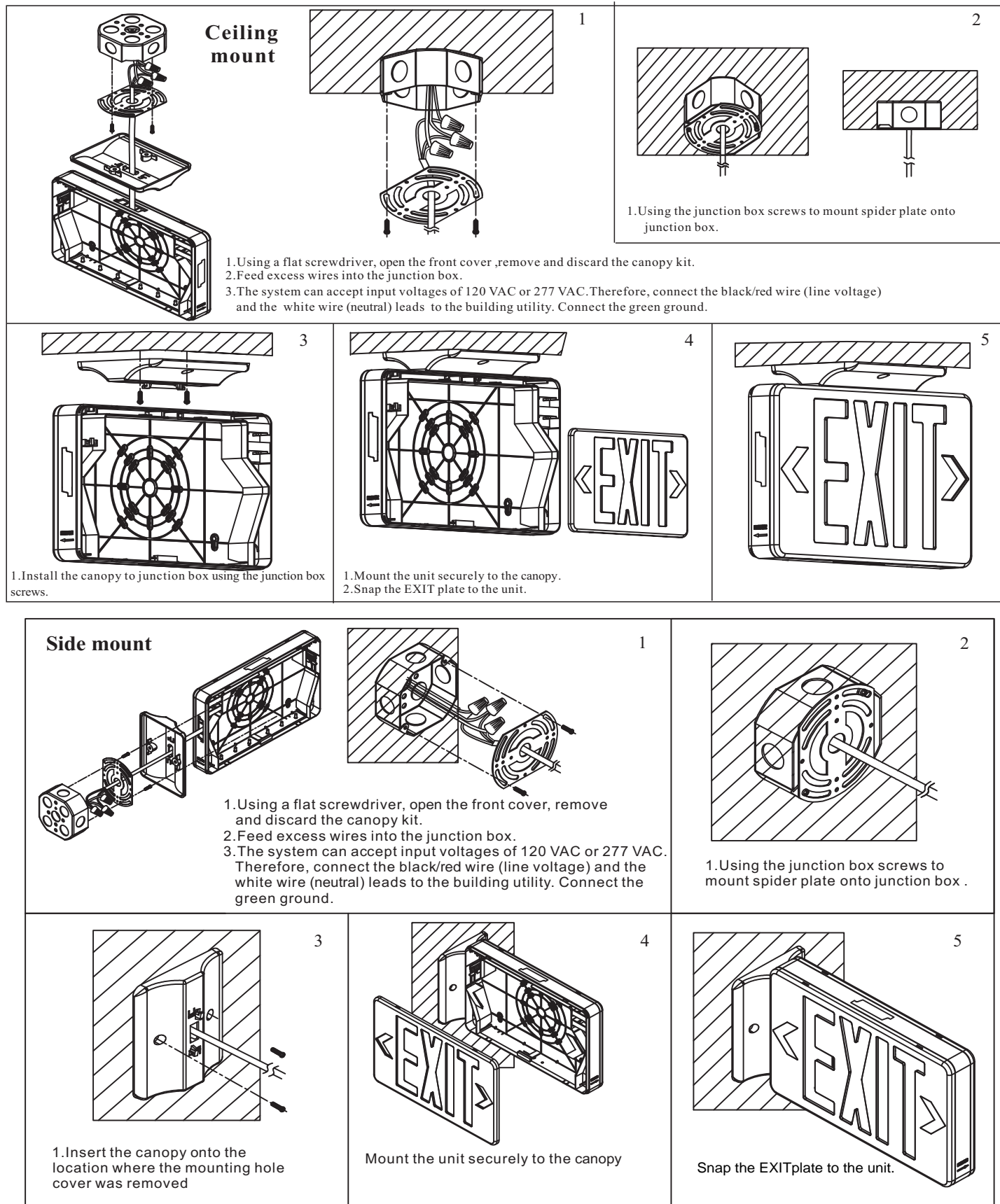
Unused wires must be capped using enclosed wire nuts.

EM114:



LED Emergency Light

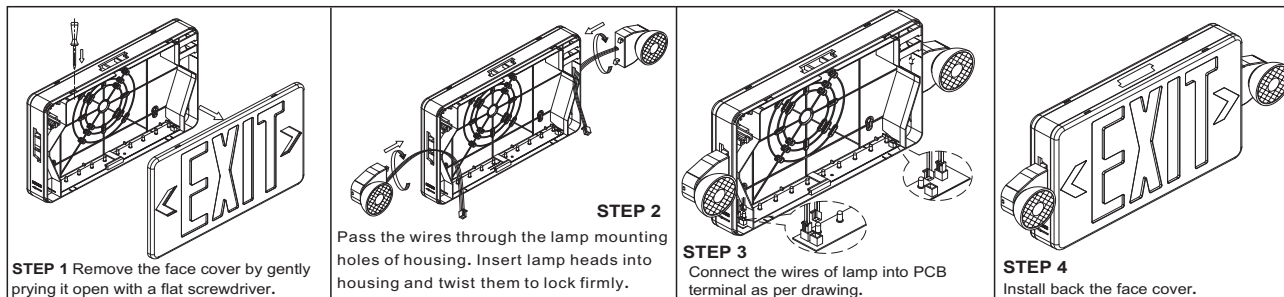
TYPE: EM110,EM114,EM119



LED Emergency Light

TYPE: EM110,EM114,EM119

EM119:



INSTALLATION DIAGRAM

