

LED Post top light specification



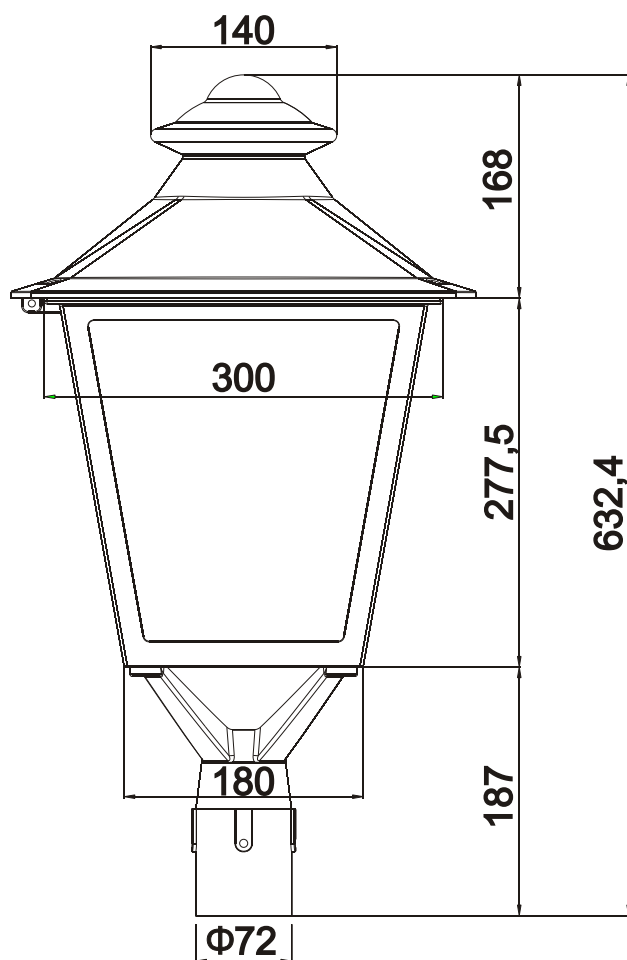
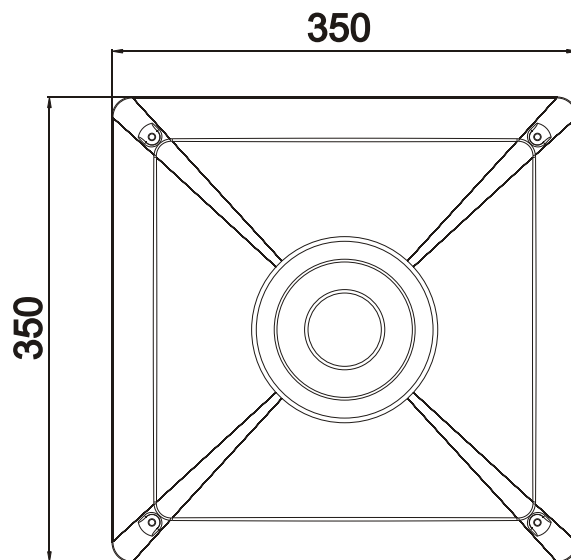
1, Application:

Pathway, plaza, Park, roadway, garden, site & area lighting and general lighting applications.

2, Features:

- 1, Beautiful design, one piece die-cast aluminum housing
- 2, One piece UV resistant polycarbonate optical lens
- 3, Using high quality LED and Sosen driver, up to 130lm/w
- 4, IP65 for outdoor application

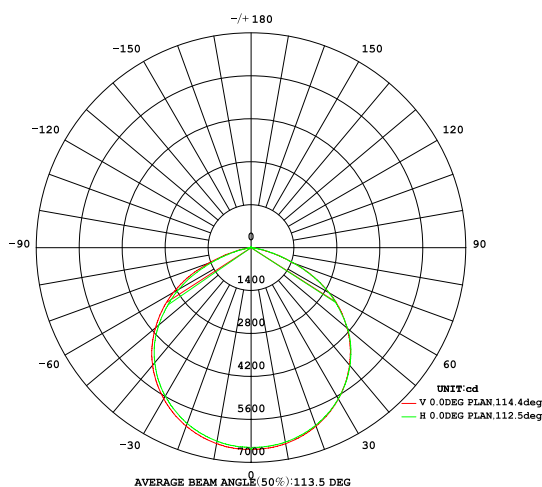
3, Product Size Unit:mm



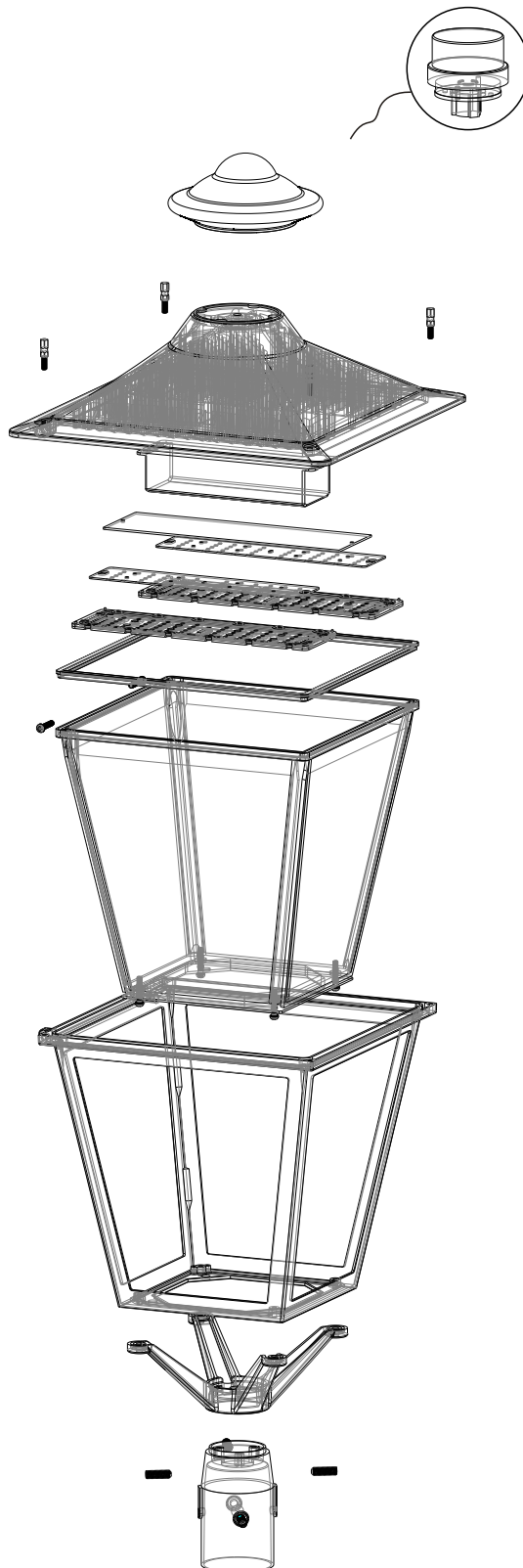
4, Performance parameter

Model	CCT	CRI	Lumens	Power	Product Size	Packing Size	Weight
YR-TP350-W30	Adjustable	≥75	3900lm	30W	350*350*632mm	400*400*660mm	8.5Kg
YR-TP350-W50	Adjustable	≥75	6500lm	50W	350*350*632mm	400*400*660mm	8.5Kg
YR-TP350-W60	Adjustable	≥75	7800lm	60W	350*350*632mm	400*400*660mm	8.5Kg
YR-TP350-W80	Adjustable	≥75	10400lm	80W	350*350*632mm	400*400*660mm	8.5Kg
YR-TP350-W100	Adjustable	≥75	13000lm	100W	350*350*632mm	400*400*660mm	8.5Kg
YR-TP350-W120	Adjustable	≥75	15600lm	120W	350*350*632mm	400*400*660mm	8.9Kg
PHILIPS 3030							
2700-6500K CCT optional							
100~277VAC							
Beam angle : 120°/90°*140°							
PF:≥0.9							
-40~50°C							

5, Light Distribution Curve



6, Explosive View



7, CCT and Power adjustment instruction

1, CCT adjustment: 3000k and 5000k color temperature sections are divided into two ways, three-position shift switch adjustment, and both light at the same time is 4000k.

(3000K-4000K-5000K)

2, Power adjustment: using resistive dimming, three-position switch to control the power dimming signal line, the power adjustment range is 30%-50%-100%



Mostion sensor function



8, CCT adjustment

1, CCT adjustment: 3000k and 5000k color temperature sections are divided into two ways, three-position shift switch adjustment, and both light at the same time is 4000k. (3000K-4000K-5000K)

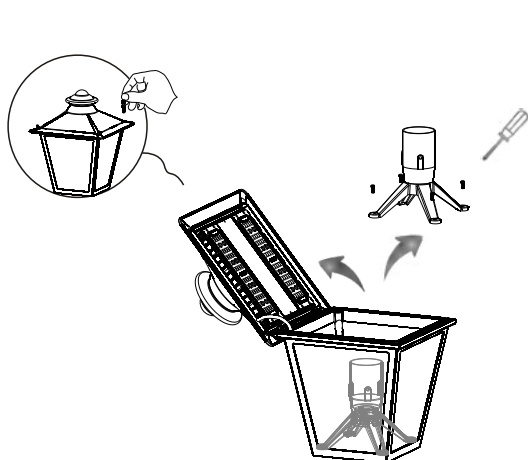


9, Power adjustment

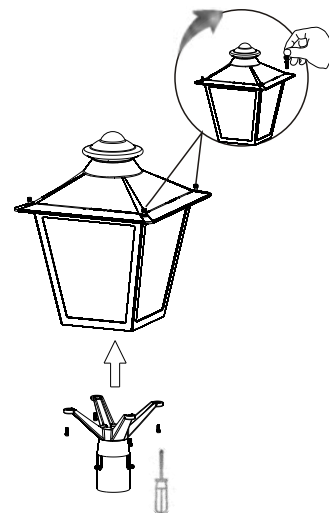
1, Power adjustment: using resistive dimming, three-position switch to control the power dimming signal line, the power adjustment range is 30%-50%-100%



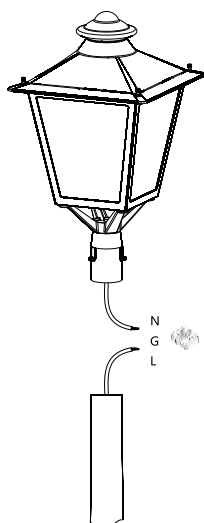
10, Installation instruction



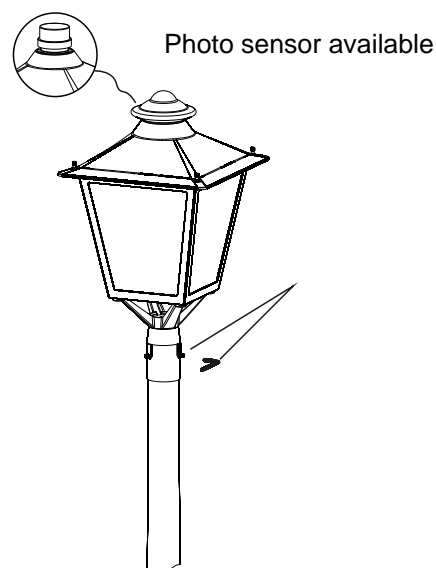
Step 1. Use your hand or tools to loosen the 2 screws on the top of the fixture, open the top cover of the fixture, and then take out the mount bracket inside the fixture.



Step 2. Close the top cover of the fixture, and fix the top cover onto the fixture using screws. And then after use screw driver to fix the mount bracket to the fixture.

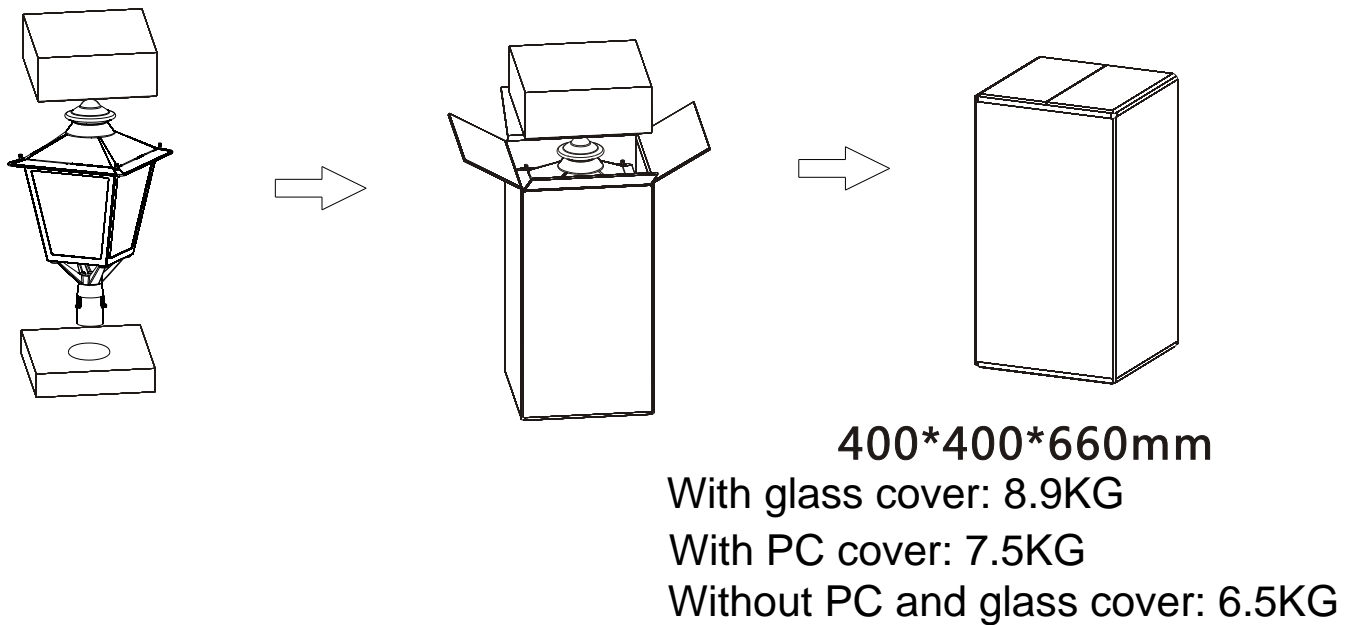
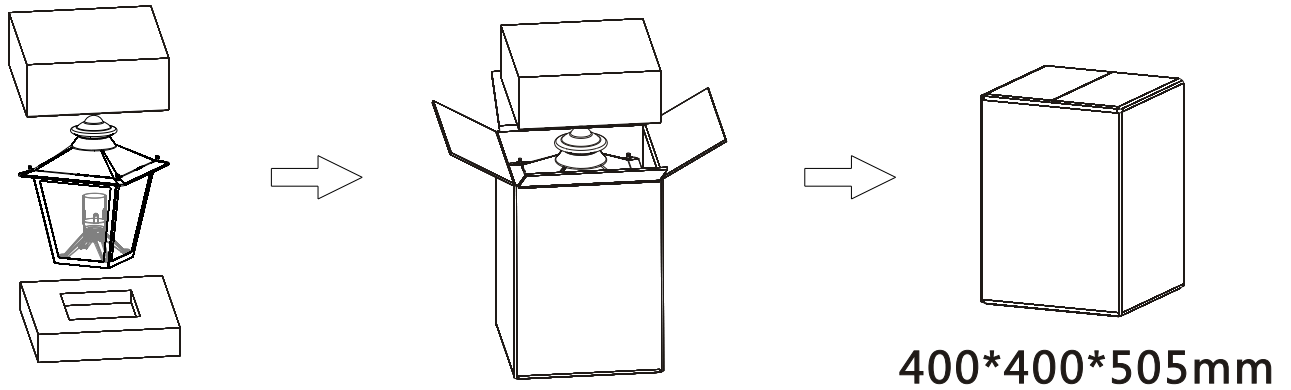


Step 3. Wire the cable with the cable in the pole.



Step 4. Use screws to fix the fixture onto the pole.

11, Packing instruction



12, Installation Notes:

- 1, Cut off the power and make sure the wall can burden the weight of the lamp
- 2, Before install the lamp, ensure the lamp wiring correctly, don't let the lamp dropping down
- 3, Do not use the lamp in the area where have aggressive gas
- 4, Do not cover anything on the lamp which is harmful for heatsink
- 5, For the safety, please make sure connect with ground wire
- 6, 5 years warranty from the purchasing date
- 7, Products faults caused by separating, remodeling or incorrectly construction are not in the quality warranty range